



Interchangeable components!

www.pierrettedentremont.com



pg. 3

... Timeless appeal

pierrette@pierrettedentremont.com

*Our handcrafted designs
will have a permanent place
in their jewellery box.*


Catalogue



PIERRETTE D'ENTREMONT

OWNER

Pierrette's jewellery making began in 1996. She started by attending beading workshops and quickly graduated to wire-work and then metalsmithing. Since 2001, she has extensively studied cultured pearls and colored gemstones. She is an Accredited Jewelry Professional and holds a Pearls Certificate from The Gemological Institute of America (G.I.A.).

Also a member of the team are Rachel Doucette (beading, pearl knotting and metal work. As a professional draftsman and interior designer she brings great creativity) and Lorna d'Entremont (Sales and managing our busy studio).

INFORMATION:

We believe in social responsibility.

Much time is spent researching materials. We need high quality goods from fair employers and reliable suppliers.

-Our silversmith is exclusively from Bali. We have gotten to know his company over the course of many years. We send him design ideas and he handcrafts them to reality!

- Our cultured pearl supplier is a group of co-op farmers from Zhuji region, China.

- Our gemstones are primarily from India from a company that we have investigated with the help of Canadian Embassies worldwide.

- Our Sterling silver chains are imported from Italy and our other components are from North America.

- The remaining metal findings and all finished jewellery are handcrafted in our studio.

Read More About Us

http://www.pierrettedentremont.com/about_beans.htm

Our Freshwater Pearl Grading

We buy our pearls by the kilogram and choose them based on the most Internationally recognized and commonly accepted system of A, A+, AA, AA+, and AAA. We do not use commercial quality freshwater cultured pearls.



AAA

Very Round to the Eye; Excellent Luster; Clean Nacre [95%+ blemish-free Surface]
Excellent Matching; * Top 1% of a Pearl Farm's Harvest.



AA+

Visibly Round; Excellent Luster; Clean Nacre [90-95% Blemish-free Surface];
Excellent Matching; *Top 5% of a Pearl Farm's Harvest.



AA

Near to off Round; Good Luster; Good Nacre [80-90% Blemish-free Surface];
Good Matching; *Top 15% of a Pearl Farm's Harvest.



A/A+

Off round to Baroque ; Moderate Luster; Medium Nacre [70% Blemish-free Surface];
Good/Moderate Matching.



A

Very off Round to Baroque ; Moderate/Low Luster; Moderate to Heavily Blemished Nacre;
Moderate Matching.



Commercial/Beading Quality

Asymmetrical Baroque; Moderate/Low Luster; Heavily Blemished Nacre; Heavy Inclusions; Moderate/Poor Matching.

Li'l Black Necklace

- * mini faceted black tourmaline and STERLING
- * Pendants of 15x20mm gemstone and sterling silver
- * Matching handforged earrings
- * Necklace 16"
- * Pendants 1.75-2"
- * Earrings 1" dangles



LBN



LBNe

"Can't go anywhere without your li'l black necklace!"

Shine like faceted black diamonds

Retail for only \$58

PENDANTS:

Blue-Black Iridescence >



LBNp/l: LARVIKITE

Pink & Black chic >



LBNp/r: Pink/Black RHODONITE

Use clips with any necklace



Interchangeable
Clip-on, Clip-off

Shimmer

On Cover
Retail \$78
STRONGER Dollar
LOWER Prices!
😊

- * Handcrafted silver pearl and sterling necklace.
- * Lapis chrysocolla [Large] pendant
- * Necklace 18" (New Plain version is 16")
- * Bracelet 6.75-7"
- * Choice of 2 earring styles



Sb



NEW
16" Silver Shimmer



Sn/16



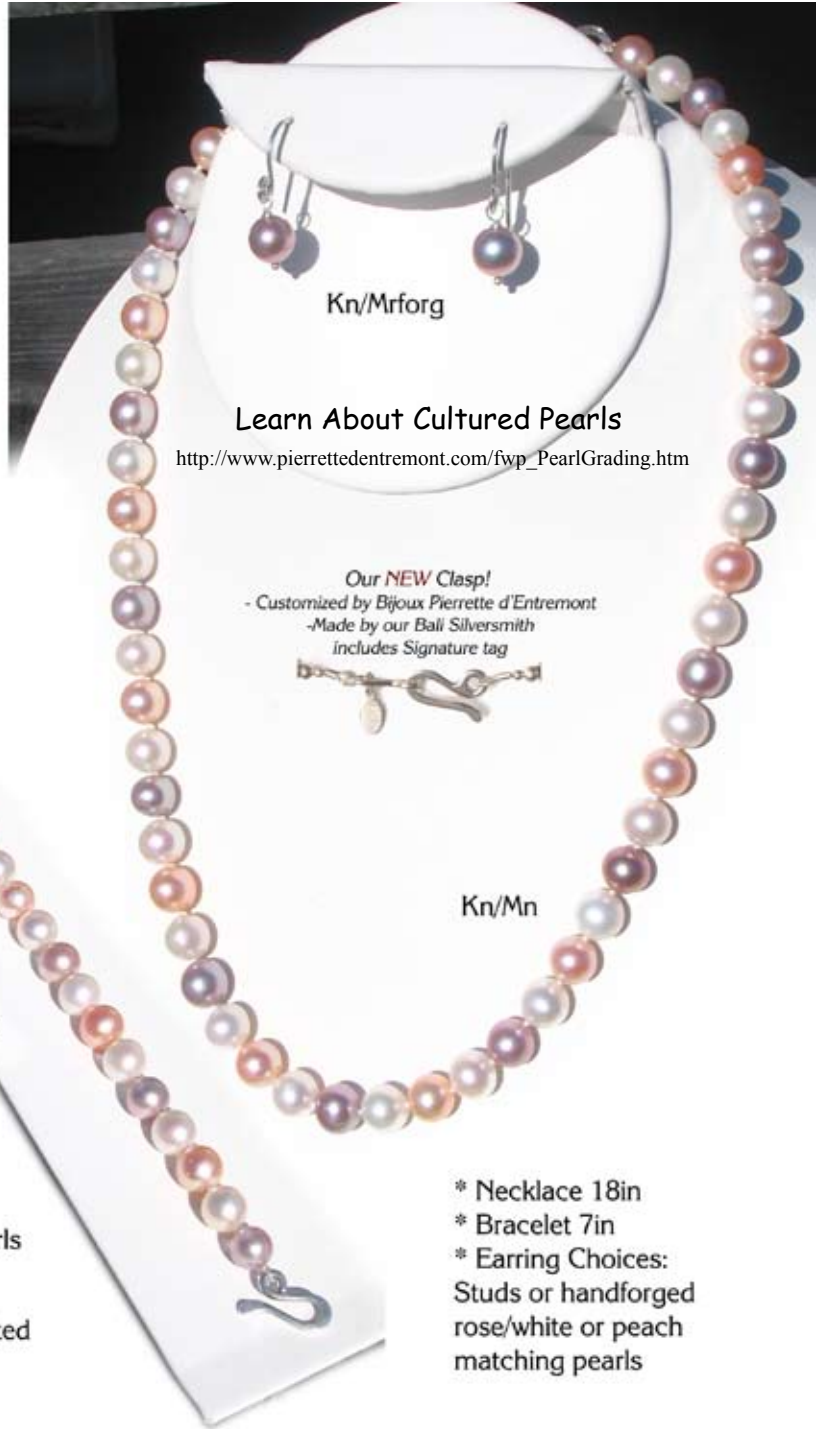
Sn



Se

Retail \$32

Knotted Multi



Kn/Mrforg

Learn About Cultured Pearls

http://www.pierrettedentremont.com/fwp_PearlGrading.htm

Our NEW Clasp!

- Customized by Bijoux Pierrette d'Entremont
- Made by our Bali Silversmith
includes Signature tag



Kn/Mn

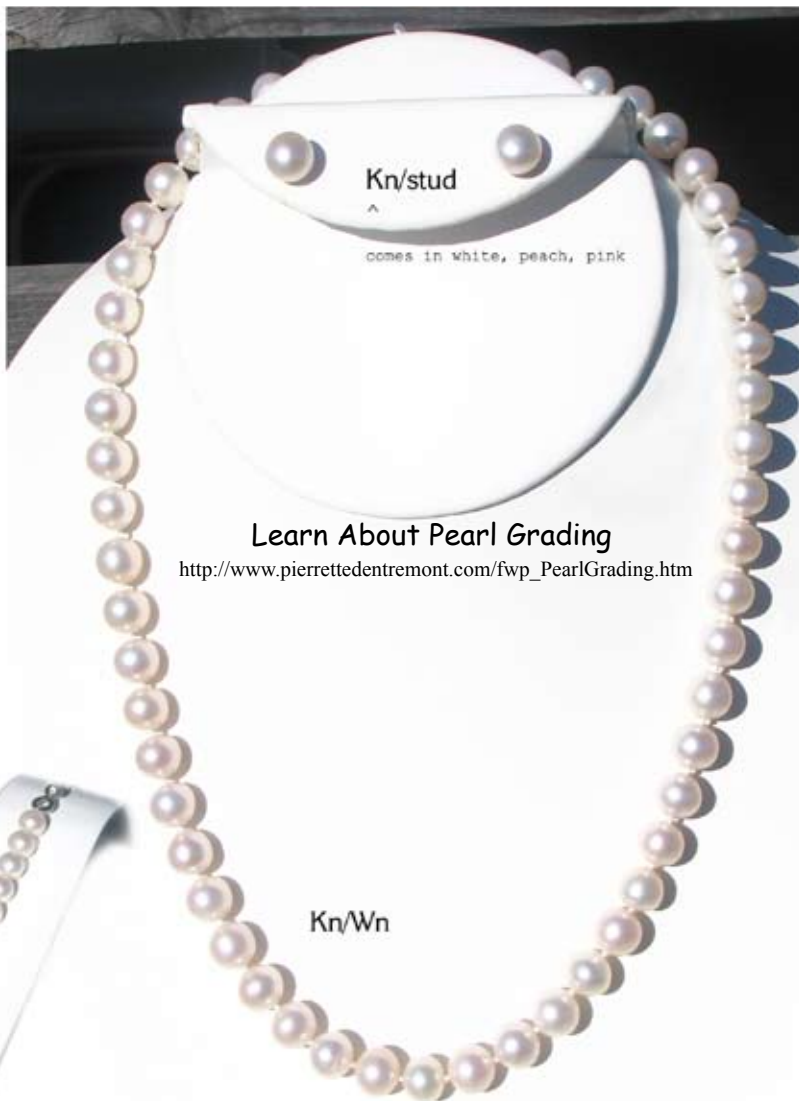
See for yourself the quality of our cultured freshwater pearls. All nacre [no beads like saltwater pearls], they will last for generations!

Kn/Mb

- * AAA cultured round pearls (FRESHWATER)
- * Knotted on silk and finished with our handcrafted clasp

- * Necklace 18in
- * Bracelet 7in
- * Earring Choices: Studs or handforged rose/white or peach matching pearls

Strand of Pearls



Learn About Pearl Grading

http://www.pierrettedentremont.com/fwp_PearlGrading.htm



Affordable Luxury!

Offer higher quality pearls
than most chain jewellers.

Kn/Wb

* AA+ [8-8.5mm] cultured nearest-round pearls
(FRESHWATER)

*Knotted on silk and finished
with our handcrafted clasp

- * Necklace 18in
- * Bracelet 7in
- * Earring Choices:
White button studs or
handforged matching pearls

Watermelon



Seafood Cream

One of our most popular designs!

Try it in blue!



SFCb



SFCn



SFCc

SFCc



SFCe



- * AA quality oval multi-pastel pearls [6-7mm]
- * Our highest quality coin pearl accents
- * Available as special order in 14K gold.
- Necklace: 17"
- Bracelet: 6.75"
- Handforged earrings

Incognito

The Basics:
Necklace, Bracelet



NEW
easy
on/off clip



The Materials:

- * "AA" 5-5.5mm cultured freshwater pearls, knotted on silk.
- * Sterling silver toggle clasp finish.
- * Various gemstones and pearl clip-on pendants.

The Fun:

- * Change it, rearrange it!
- * Wear it in classic style, toggle in front or with any of 5 interchangeable pendants.
- * Perfect for add-on gifts.

The Interchangeable Pendants



IGD1
8mm pearl



IGD2
4-6mm pearls



IGD3
chalcedony, pearl

NEW
sold out
until further notice



IGD4
Mauve fluorite



NEW
IGE5
Pearl Studs (5mm)

The Earrings



IGE1
single pearl



IGE2
3-pearl clusters



IGE3
5-pearl clusters



Gemstones



garnet
Gn/ga
Ge/ga
Gb/ga
Gp/ga

Ruby crazy-lace agate
removable pendant
18x25mm



Dark yellow opal
removable pendant
18x25mm



amethyst
Gn/am
Ge/am
Gp/am
Gp/am

Golden vein purple jasper
removable pendant
18x25mm



peridot
Gn/pe
Ge/pe
Gb/pe
Gp/pe



Rhyolite
removable pendant
18x25mm

- * 3.5-4mm faceted AA+ gemstone necklaces, 16"
- * Sterling silver findings and chain
- * Argentium handforged earrings
- * Removable 18x25mm stone pendants

BLUE Blue

Gemstones



Sodalite
removable pendant
18x25mm



iolite
Gn/fo
Gb/fo
Ge/fo
Gp/fo



apatite
Gn/op
Gb/ap
Ge/ap
Gp/ap

Blue crazy-lace Agate
removable pendant
18x25mm



aquamarine
Gn/aq
Gb/aq
Ge/aq
Gp/aq

- * 3.5-4mm faceted AA+ gemstones
- * Sterling silver findings and chain
- * Argentium handforged earrings
- * Slip-on/off pendant choices.

Amazonite with Pyrite inclusions
removable pendant
18x25mm



Use pendants on chains!
Retail \$25

Earth & Ocean Collection



Wild
Ocean Rose



- * Beautiful large (8-9mm near-round freshwater cultured pearl
- * High quality faceted gemstone

- * 18" necklace
- * 7" bracelet
- * handforged earrings

Photographer Monique d'Eon



Copper Beach



White
Surf



Sand
& Sea

*Bijoux
Classics*



CMchan



CM6.5b

CMcoin

CM16

*Coastal
Mist*

*Crème
Caramel*



CC6.5b
CC7b

CCcoin

CCchan

CC16, CC18

* White oval (~6-7mm) mix with blue-green, golden yellow or irridescent brown freshwater cultured pearls.

* Choice of Chandelier or Shaped Pearl earrings.

* Necklace 16" or 18"

* Bracelet 6.5" or 7"



MRchan

MR6.5b
MR7b

MRcoin

MR16
MR18

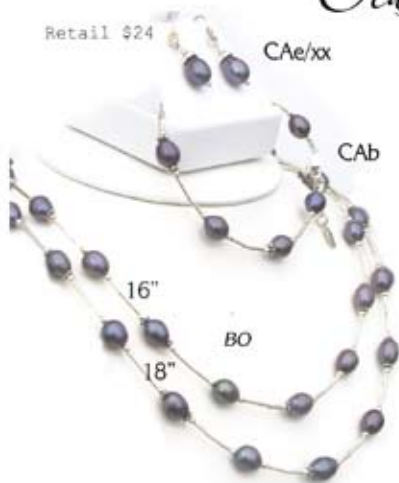
NEW

Mellow Roast

Classic Appeal

LL (CA)

Retail \$24



- * Set in Sterling silver
- * Mix n' match with choice of 9 colors.
- * Pendants in 16" or 18"
- * Necklaces in 16", 18"
- * bracelets in 6.5" + extension
- * matching handforged , studs or levers

Item No.
CAxx(length)/xx(color)

So affordable
Retail \$52



- Multi Pastel (MP)
- White Sands (WS)
- Blue Ocean (BO)
- Sea Shell (SS)
- Harb or Mist (HM)
- Golden Dunes (GD)
- Cherry Mocha (CM)
- Acadian Toffee (AT)
- Purple Lupins (PL)

NEW
Anti-tarnish bevel-cut chains
Retail \$30

(CAP/xx)

("Simply Pearls Collection")

A Contemporary
twist on a classic!

Cultured Shapes



White Shell /WS

New Length: 20"



Stormy Seas /SS



Golden Dunes /GD



Beach Sunset /BS

Contemporary, but classic
Necklaces retail from \$34
Earrings retail from \$28



Potato Fudge /PF



Silver Fog /SF

- * Large cultured "SHAPE" pearls.
- * Set in Sterling silver and finished with strong pendant bail.
- * Necklaces in 16, 18 or 20"
- * Matching leverback earrings

Necklaces: TSG16, 18 or 20/xx
Earrings: TSGe/xx

The Tahitian

Made for a man...
tough enough for one too!



NEW

TahiDD
18"

Each pearl will be unique
but will always be a genuine
Tahitian pearl.

The "Guy"

- * Genuine, large Tahitian cultured pearls.
(Saltwater cultured and naturally dark)
- * Sterling silver couplers and findings.
- * Top quality 1.5mm, 2mm and 4mm Italian leather [Black]
- * Necklaces 18" or 20"



TTn/18 or 20

Original



Tahi

RUGGED

* Just Leather: adjustable"

Tahitian Pearls:

Produced by black-lipped oysters in the islands of French Polynesia. This oyster is large and its pearls are larger-than-average. They are unique because of their natural dark colors (ranging from silver to black, and green to purple). Large sizes can command very high prices.



NEW

LEATHER
Retail from \$28



- * Necklaces are made in 18 or 20 inches.
- * Centres are genuine, large, cultured pearls.
- * Cording is LEATHER
- * All other findings are sterling silver.

BLACK COIN [/BC]



SILVER OVAL [/SO]



ANTIQUE BRONZE [/AB]



WHITE COIN [/WC]



GOLD SQUARE [/GS]



NECKLACES:

MP18/XX
MP20/XX

Precious Memories

for their little princess

-Bracelet Package: PMb/SET
 -Individual bracelets: PMb/xxx
 (xxx=month code)

Birthstone Bracelets

- * For children 3 to 7 [5" + extension].
- * Cultured freshwater pearls.
- * Birthstone is SWAROVSKI round crystal
- * Little Girl slider bead and findings are sterling.
- * Sterling silver extension lets bracelet "grow" with child.

PMb/jun



6 yrs

- * Complete set includes packaged bracelets 2ea/ month, one white display and a laminated description card with birthstone chart!



* Individual bracelets are available.

NEW Infants

Bracelet Package:
PMib/SET

pink/pink crystal
 white/pink crystal
 white/clear crystal
 white/lavender crystal



- * Set includes:
 Packaged bracelets 4ea/ style,
 One white display
 Laminated description card



Sugar & Spice

Children's Jewellery Collection



- * Small oval cultured pearls available in: Rose [R], Peach [P], White [W] and Gold [G]
- * Set in Sterling silver with 1" extensions.
- * Small stud earrings match all jewellery.
- * Beautiful bevel-cut anti-tarnish chains in 12" or 14"



"First Pearls"
P



MySh/12 or /14

* Little heart with pink cultured pearl

"My Sweet Heart"

Necklace: FP12 or14/x
Bracelet: FP4.5 or 5/x
Earrings: S&Sstud/x



R

NEW

"Little Princess"

x=colour choice [x]



Retail \$28



G



W

Necklaces: LP12 or 14/x
Bracelet: LP4.5 or5/x
Earrings: S&Sstud/x



Read about Bijoux PdE in the Press

<http://www.pierrettedentremont.com/EventsPress.htm>

Caring for our jewellery

http://www.pierrettedentremont.com/Jewelry_care.htm

Jewellery Sizing Guide

<http://www.pierrettedentremont.com/Jewelrysizeguide.htm>



1076 hwy 335
Middle West Pubnico
Nova Scotia, B0W 2M0
Canada

ph: 902-762-0186
fax: 902-762-0420
toll free: 1-888-818-5004

website: www.pierrettedentremont.com

Argentium[™]

We now use Argentium[™] sterling silver.
Our handforged earrings, component wire and jump rings
are made from this new anti-tarnish alloy!

Jewellery Photos by Rachel Doucette